

HEALTH AND SAFETY ALERT**Hatch Foreman fractures elbow after tripping over on vessel**

Date and time: 24/07/2022 at 22:30

Location: Cell 05 – Bay 09 - Berth 2

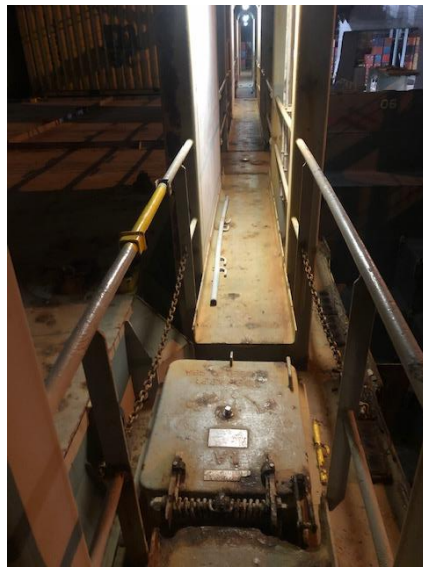
Incident no: 1974

Incident Details: Hatch Foreman (HF) was working onboard the vessel and opened the bar of the access point that led from the stanchion walkway onto deck, at bay 09, in the 05 cell position. As he stepped across onto deck, he tripped over the Safety Chain that was located at shin height (15 – 18cm). He fell forward and landed on his elbow.

Immediate Actions: First aider attended the scene and applied a cold compress. HF was assessed by First Aider and taken to Hospital for medical evaluation.

Actual Outcome: HF required surgery to fractured elbow.

Direct causes: *The Safety Chain sits just above Hatch Lid height and is not clearly visible due to it being discoloured and its location. It is only located at below deck manhole lids at 2 locations throughout this vessel.*

**Quick Tips for Prevention****Vessel should:**

- Safety Chain to be removed permanently, as to eliminate trip hazard
- Safety Chain to be painted by Shipping Line- Bright or florescent Paint the same as opening bars (Yellow)

HF & Lashers should:

- Maintain Situational Awareness when working on vessels
- Be aware of Slip, Trip and Fall Hazards following
- VIR should be updated to make deck teams aware of hazards on deck

Remember!! We are all working in a high-risk industry and such hazards as this can be unforeseen, even to a competent, experienced Port Worker.