

15 September 2023

# Safety Bulletin 9 /2023

## Dropped fluff pulp



Dear all,

G2 Ocean is committed to providing a safe and healthy work environment for all personnel involved in our operations. The purpose of our Safety Bulletins is to raise awareness of health & safety risks associated with cargo operations.

G2 Ocean works with several hundred stevedore companies worldwide. We believe that by seeking and sharing insights across company and country boundaries, we can prevent future incidents together. Descriptions of incidents will always be fully anonymised.

This edition is about a technical failure in our equipment. While you may not use exactly this type of equipment, there are lessons learned for all related to inspection routines of critical parts. And we see how following “Life-Saving Rules” can be the difference between lives lost and “just” damage to property. If you have any feedback, please email us at:

[safety@g2ocean.com](mailto:safety@g2ocean.com)

Best regards G2 Ocean Team

Pioneering Sustainable Shipping Solutions  
[www.g2ocean.com](http://www.g2ocean.com)



### Fluff pulp

Fluff pulp is a type of pulp used in personal care products, such as diapers and napkins.

Unlike other types of pulp, vacuum pads are used for lifting operations. There are no hooks connected to metal bands wrapped around the units, as is the case with other types of pulp. No manual handling in the cargo hold is required for (un)hooking, and this reduces the risk of injuries.

Regardless of cargo type and lifting method, there is always a possibility that units may drop during a lift.

A no-go zone shall be established in the cargo hold and on the quayside during lifting of fluff pulp.

We keep reminding everyone about the below rule, one of G2 Ocean’s Life-Saving Rules:

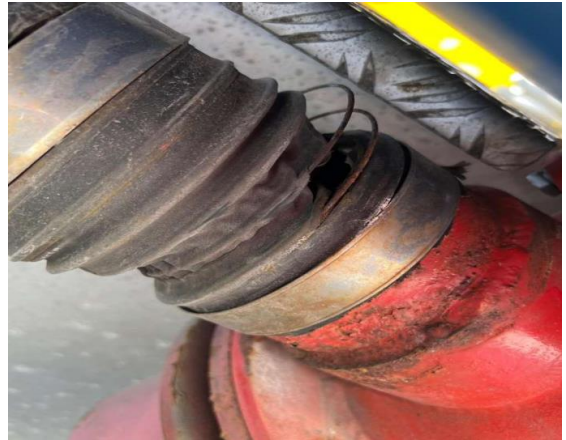
### **NEVER WALK UNDER A SUSPENDED LOAD**

Stay clear of crane operations.





Some reels dropped down on the vessel, some landed on the quay.



Cause: The main vacuum hose failed during the lift and the entire spreader instantly lost vacuum.

### Integration

Integration is one of G2 Ocean's desired safety behaviours. We expect this behaviour from our own employees, and everyone we work with. It means to integrate what you know into your daily habits. For example: Most people **know** that the safer path is on the opposite side of where the cargo operations is ongoing, but we need to **act** on it and always choose that side.



#### Consequences:

- Damage to cargo.
- Damage to the vessel railing.
- Potential fatality if dropped cargo hit stevedores, crew or other persons in the area.

#### Lesson learned:

- Onboard the vessel, do not walk on the side of the vessel where cargo is passing during crane operations. Never walk under a suspended load.
- The G2 Ocean planned maintenance checklist has been amended, with a more detailed description of how the condition of this critical part (the main hose) should be assessed. The replacement interval has been revised.
- A pre-use inspection of the spreader / frame shall always be completed before operations starts.