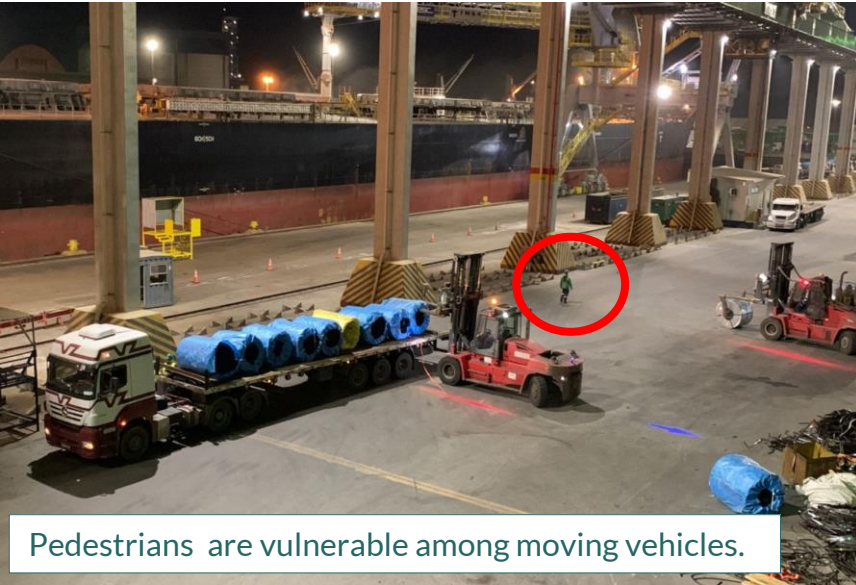




Safety Bulletin 11/2023

Fatal forklift incidents



Pedestrians are vulnerable among moving vehicles.

Dear all,

G2 Ocean is committed to providing a safe and healthy work environment for all personnel involved in our operations. The purpose of our monthly Safety Bulletins is to raise awareness of health & safety risks associated with cargo operations.

G2 Ocean works with several hundred stevedore companies worldwide. We believe that by seeking and sharing insights across company and country boundaries, we can prevent future incidents together. Descriptions of incidents will always be fully anonymised.

In this edition of our Safety Bulletin we highlight forklift incidents. Over the last 13 months we have been notified about five tragic incidents resulting in four fatalities and one disability case. While none of these incidents happened while handling our cargo, it happened in ports we call frequently. If you have any feedback, please email us at: safety@g2ocean.com

Best regards G2 Ocean Team

Tragic and avoidable incidents

Traffic is a known safety risk in society. Looking left and right before crossing a street is something all kids learn. Road traffic is strictly regulated, and pedestrians and cars are segregated as much as possible. But inside ports there are large, open spaces where persons walk and work, among a variety of moving vehicles.

Five recent incidents have one thing in common – a person was hit by a forklift:

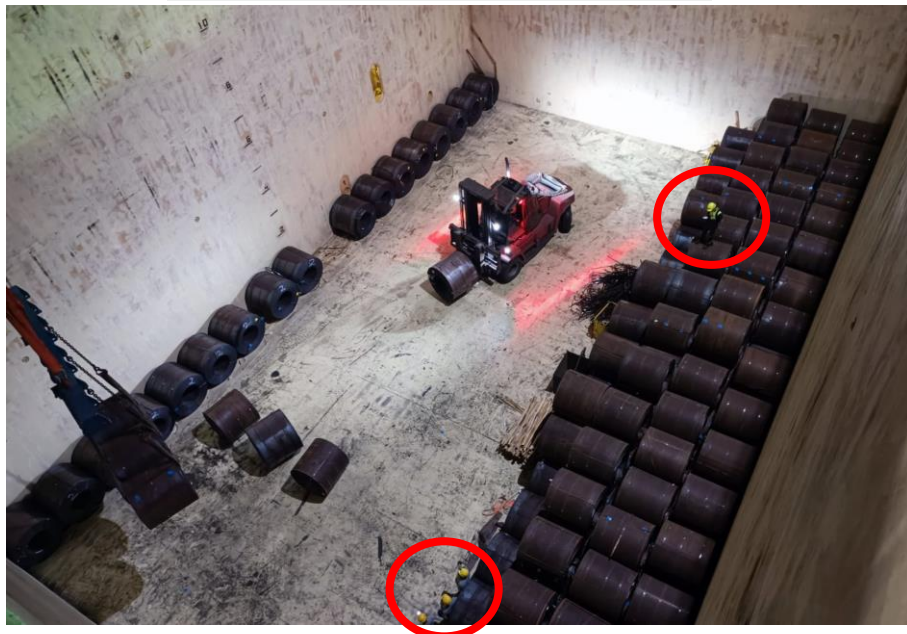
- A stevedore was about to finish her shift when she was hit by a forklift on the quayside.
- It was nighttime and only two persons were present at the terminal. The forklift was outside the designated driving lanes and hit another stevedore, who was having a meal break.
- A stevedore's leg was hit by a forklift, while he was working in the truck loading area.
- A tallyman was hit by a forklift on the quay and suffered severe injuries to both legs.
- A tallyman left a safety cage to check a cargo of steel plates and was hit by a 40t forklift carrying a wooden box.



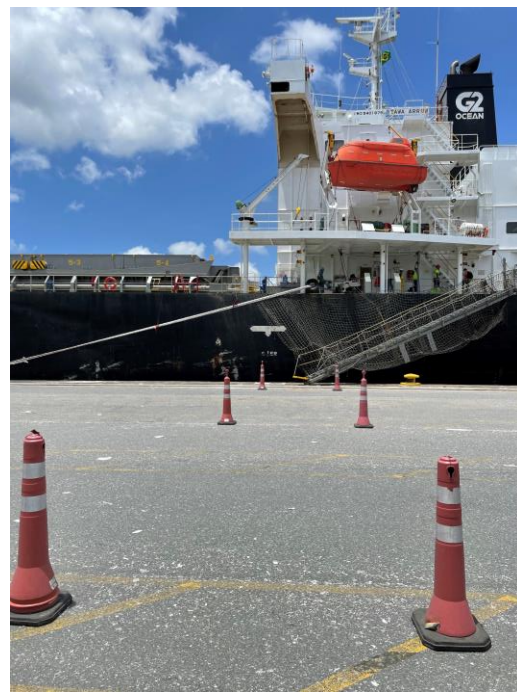
IDENTIFY DANGER ZONES



Always be aware of your surroundings. Identify potential hazards, including moving objects.



Forklift lights reduce risk but cannot eliminate it. These stevedores are at a safe distance in this cargo hold.



A temporary walkway has been made using traffic cones, to make vessel access safer for pedestrians.



Insight

Insight is one of G2 Ocean's desired safety behaviours. We expect this behaviour from our own employees, and everyone we work with. If you see or hear about a near miss, share this information by reporting it! We think that near misses related to traffic are underreported. Action can be taken to prevent future fatalities if the near misses are reported.

Consequences:



Tragically the five incidents resulted in four fatalities and one disability / amputee case.

All statistical evidence point towards terminals and quaysides having extremely high traffic safety risk, compared to the number of pedestrians killed by moving vehicles on regular roads.

Lesson learned:



- Follow this life-saving rule: **Identify danger zones**. It can be difficult to "always" be aware of your surroundings. Remind each other at toolbox meetings and establish good habits for how you move around in port, and how you position yourself when there are vehicles nearby.
- Always assume that the driver does not see you.
- After the incidents traffic patterns have been revised and no-walk zones established. Consider similar action in your work area.