



15 August 2025

Safety Bulletin 8 /2025

Going to work



PREVENT SLIPS, TRIPS AND FALLS

Keep an eye out for slip, trip and fall hazards.

This is one of G2 Ocean's Life-Saving Rules, for good reasons.

Dear all,

G2 Ocean is committed to providing a safe and healthy work environment for all personnel involved in our operations. The purpose of our Safety Bulletins is to raise awareness of health & safety risks associated with cargo operations.

G2 Ocean works with several hundred stevedore companies worldwide. We believe that by seeking and sharing insights across company and country boundaries, we can prevent future incidents together. Descriptions of incidents will always be fully anonymised.

This edition is about going to work, and how safety matters even before you get to the place where you start doing your tasks.

If you have any feedback, please email us at: safety@g2ocean.com

Best regards G2 Ocean Team

Pioneering Sustainable Shipping Solutions
www.g2ocean.com

Entering the cargo hold

For many readers of this bulletin "going to work" involves entering the cargo hold of a vessel. It is perhaps human nature to not be fully alert and ready, until you start doing your work tasks.

Two recent incidents on our vessels show that the safety mindset needs to be switched on also when *under way* to the workplace.

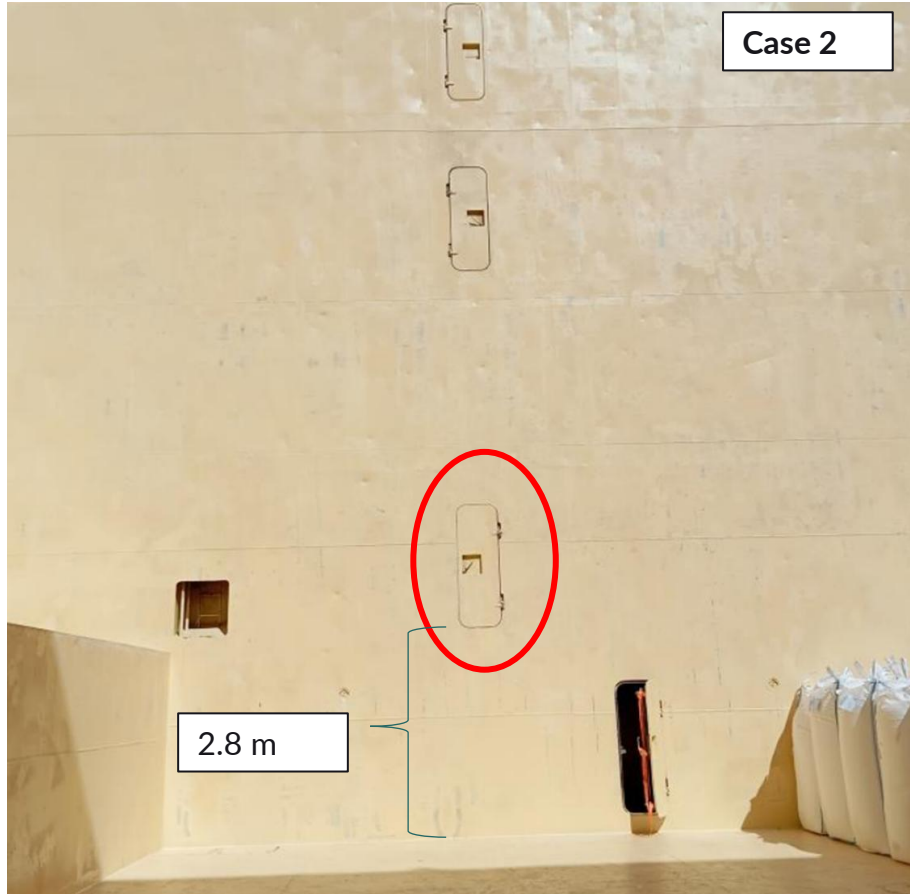
Case 1: The stevedore below is climbing a ladder at a height of about 13 m, without a safety harness. This ladder is a dead end. It would only come in use if other access points were blocked by cargo. When asked, the stevedore said he made a mistake, choosing the wrong route when entering the cargo hold.



Case 1



The above picture shows a similar access ladder, on a different ship. It is possible to lose track of where you are and open the wrong door.



Case 2

2.8 m

The vessel was about to start loading big bags. All the doors open outwards, into the hold. The stevedore appears to have opened the 2nd door from the bottom and stepped into the empty space.



Intervention is one of G2 Ocean's safety behaviours. We expect this behaviour from our own employees, and everyone we work with, including crew and stevedore. In the case described in the previous page, persons nearby stopped the stevedore and told him to return to deck.

Consequences:



- Case 1: No consequences, this was a near miss.
- Case 2: The stevedore fell from a height of 2.8m, into the cargo hold. He was taken to hospital in an ambulance. The extent of his injuries is not known to us.
- Potential injuries or fatalities among stevedores, crew and other personnel when entering the cargo hold.

Lesson learned:



- Prevent slips, trips and falls. That's a Life-Saving Rule.
- Every vessel is different. If you are in doubt, ask vessel crew for guidance. They will know the safe access route to the cargo hold.
- Open doors carefully when entering cargo holds.
- Safety awareness begins when you leave home. Many accidents happen under way to the site where you are going to do your work tasks.